

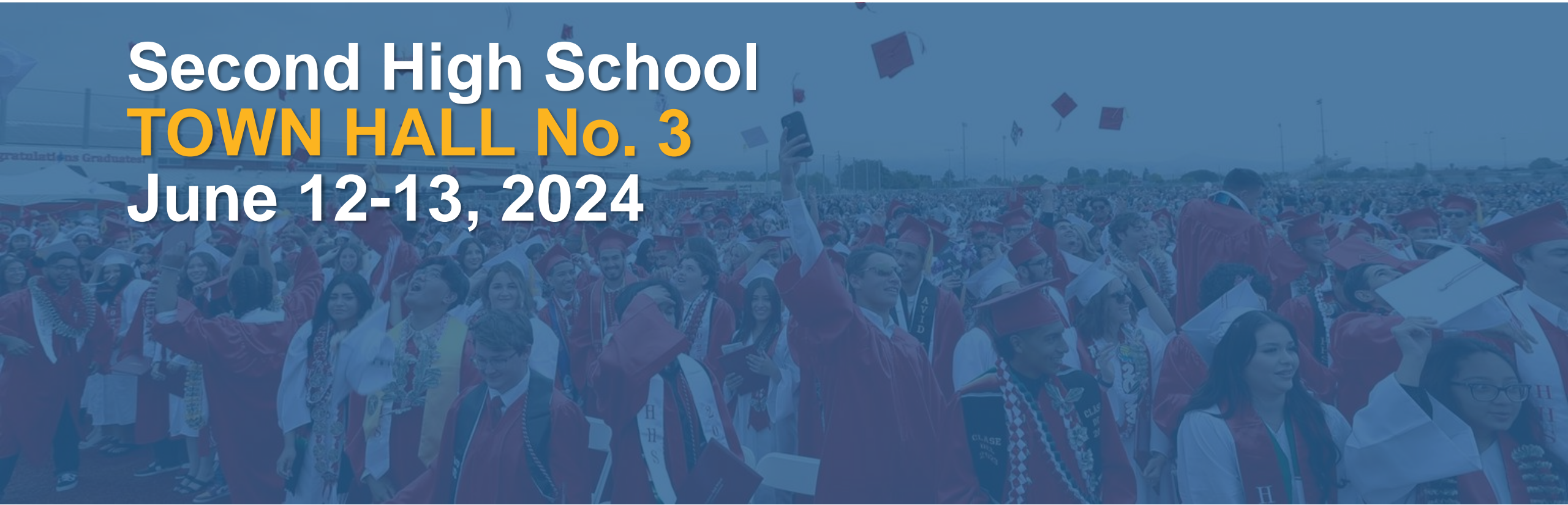
BUILDING

A BRIGHTER FUTURE



San Benito
HIGH SCHOOL DISTRICT
Continuing Excellence

Second High School
TOWN HALL No. 3
June 12-13, 2024



Welcoming Remarks

1. Process-to-Date
2. Campus Design (Preliminary)
3. School Name / Visual Identity
4. Funding Strategies
5. Next Steps

Today's Agenda

Q:

Throughout the presentation, there will be opportunities for questions and discussion.

Interactive Discussion

1. Process-to-Date

2023

2024



Pre-Bond Timeline



27 DISCUSSION
SESSIONS

450+
PARTICIPANTS

1.5K+
COMMENTS

Engaging with You!



How many of the past sessions did you attend?



0%
First Time

0%
1

0%
2

0%
3+



2. Campus Design

(Preliminary)



San Benito
HIGH SCHOOL DISTRICT

DESIGN
FOR
GOOD
HMC
Architects



ROOTS & WINGS



Heritage, History, Culture



Aspire, Transcend, Elevate



Theme & Design

Join at menti.com | use code **4108 2468**

SBHSD SHS TOWNHALL

What comes to mind when you Roots & Wings?



transpiration
leader bold
creative



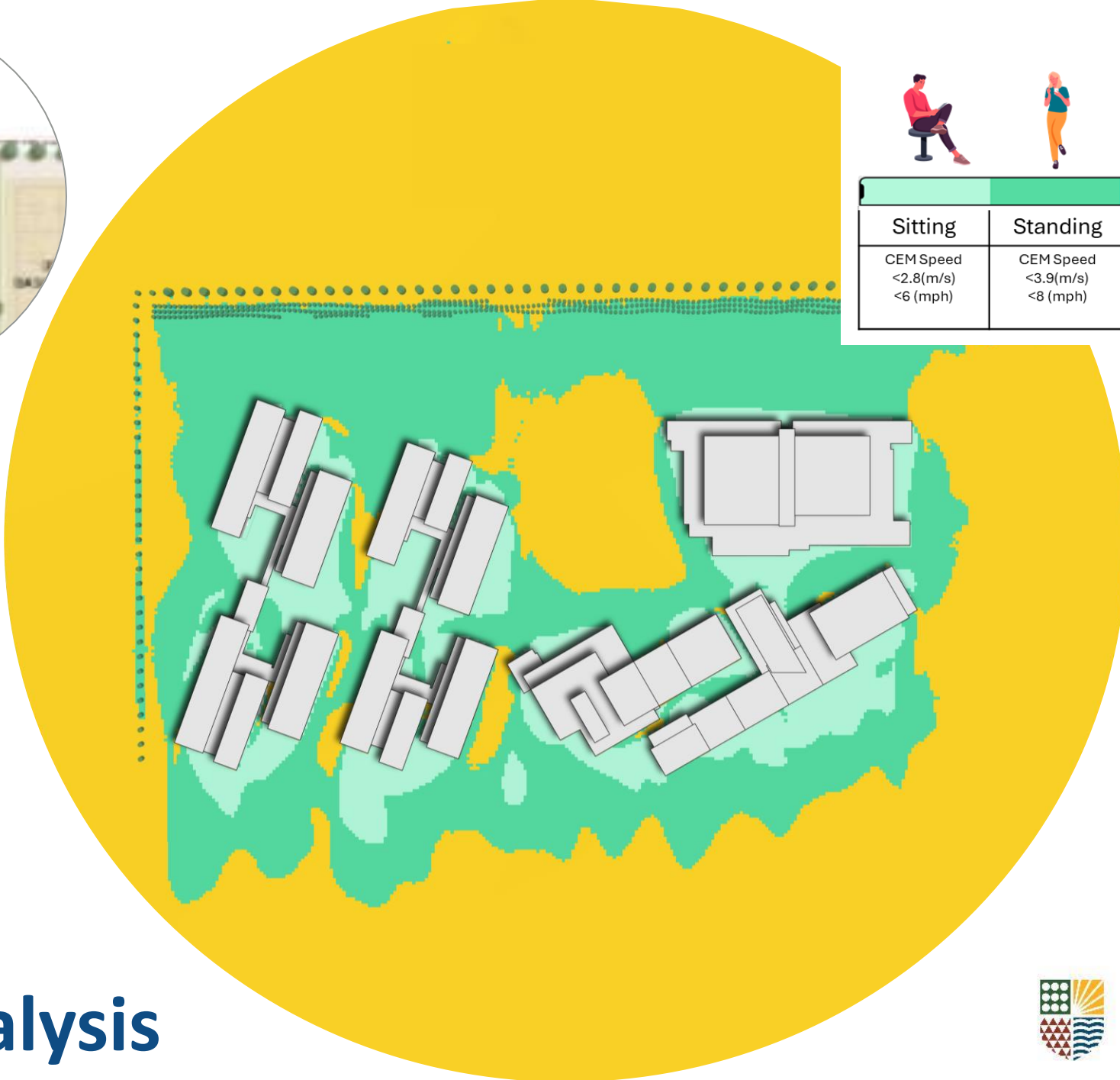
Site Context



Campus Master Plan



Landscape Buffers



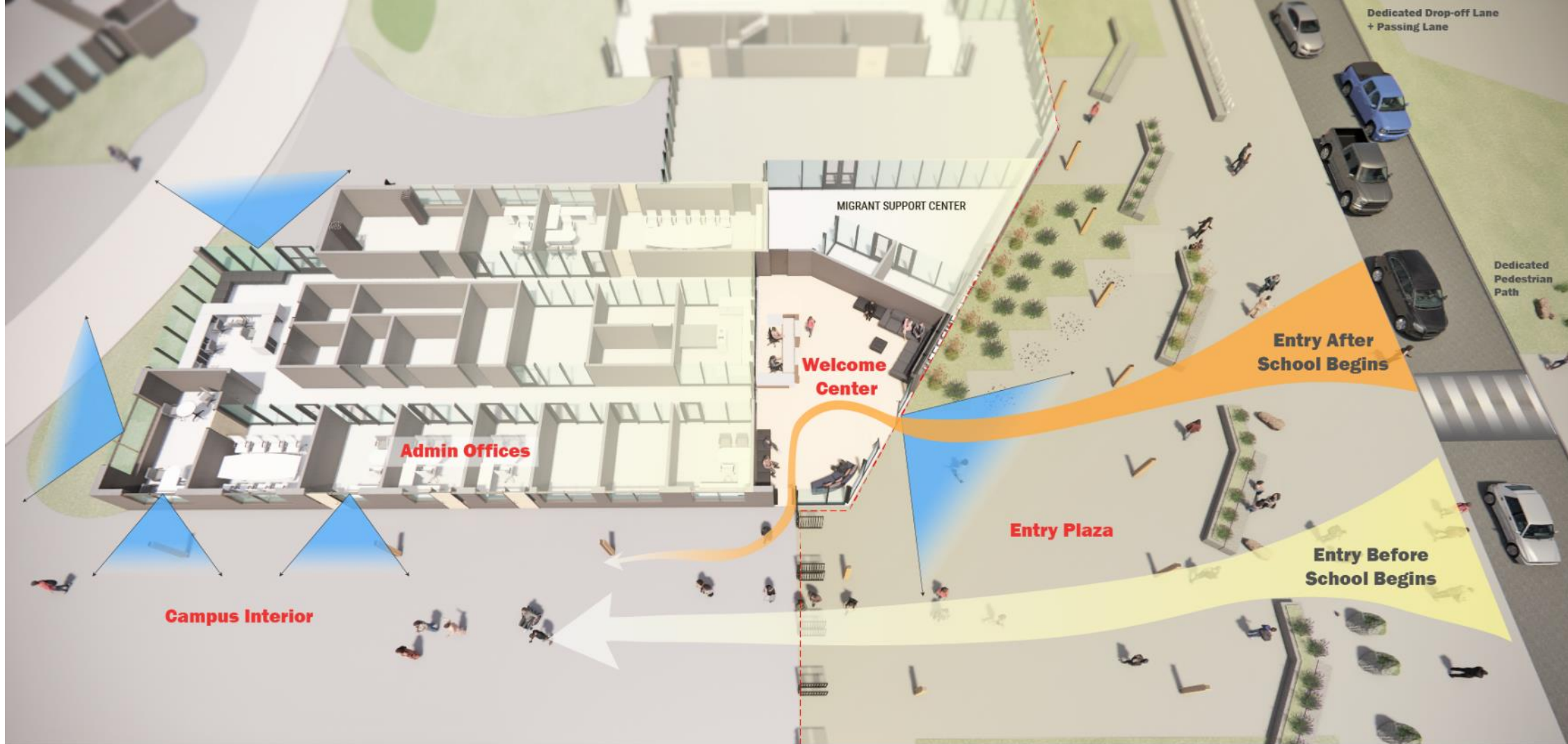
Sitting	Standing	Strolling	Walking	Uncomfortable
CEM Speed <2.8(m/s) <6 (mph)	CEM Speed <3.9(m/s) <8 (mph)	CEM Speed <4.7(m/s) <10 (mph)	CEM Speed <5.6(m/s) <12 (mph)	CEM Speed >5.6(m/s) >12 (mph)

Wind Analysis



Core Campus Plan





Campus Interior
Distributed Staff Offices + Zoned Building Clusters

Secure Entry Plaza
Controlled with maximum visibility

Secure Perimeter- Gated Entry
With single point of access through Admin during school hours

Entry Plaza
Welcoming with maximized Supervision

Drop Off Zone
Decorative site features as active barriers



Campus Security

Join at menti.com | use code **4108 2468**

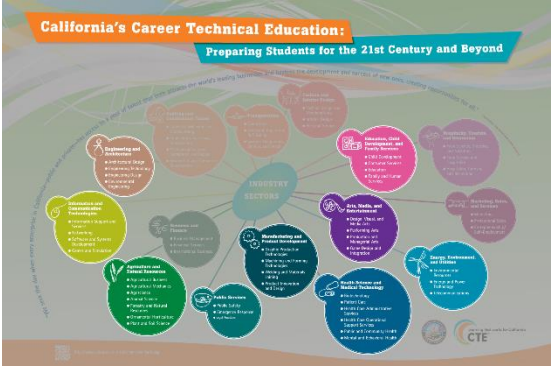
SBHSD SHS TOWNHALL

Have we addressed your security concerns?



California's Career Technical Education:

Preparing Students for the 21st Century and Beyond



Engineering & Architecture



Public Safety



Education & Child Development



IT & Communication Tech.



Manufacturing & Product Dev.



Media & Entertainment



AG & Natural Resources



Health Science & Medical



Energy, Environment, Utilities

CTE Pathways



San Benito
HIGH SCHOOL DISTRICT

DESIGN
FOR
GOOD
HMC
Architects



Ag Tech Farm



Do you think we are on the right track with the CTE programming?



- Yes
- Almost There
- Not Sure





Learning Villages



Learning Villages



Interior Collaboration Space



Learning Village Plaza

Join at menti.com | use code **4108 2468**

SBHSD SHS TOWNHALL

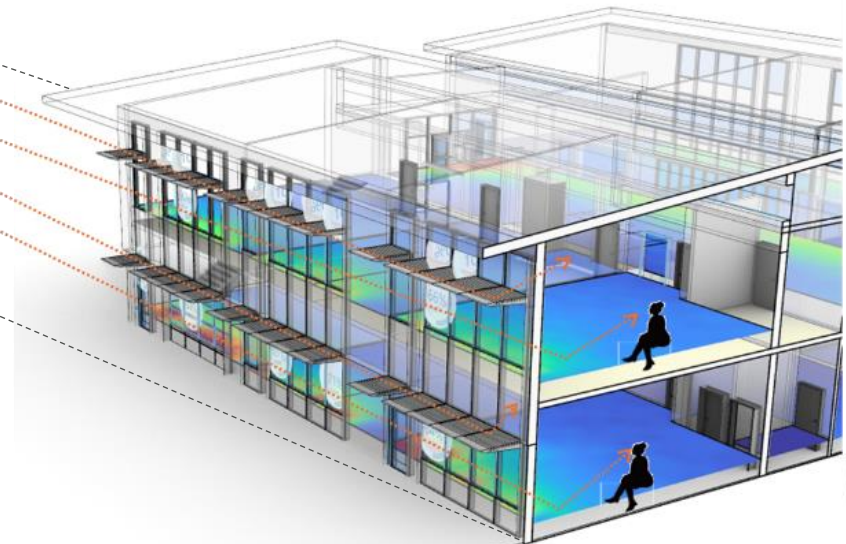
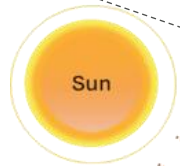
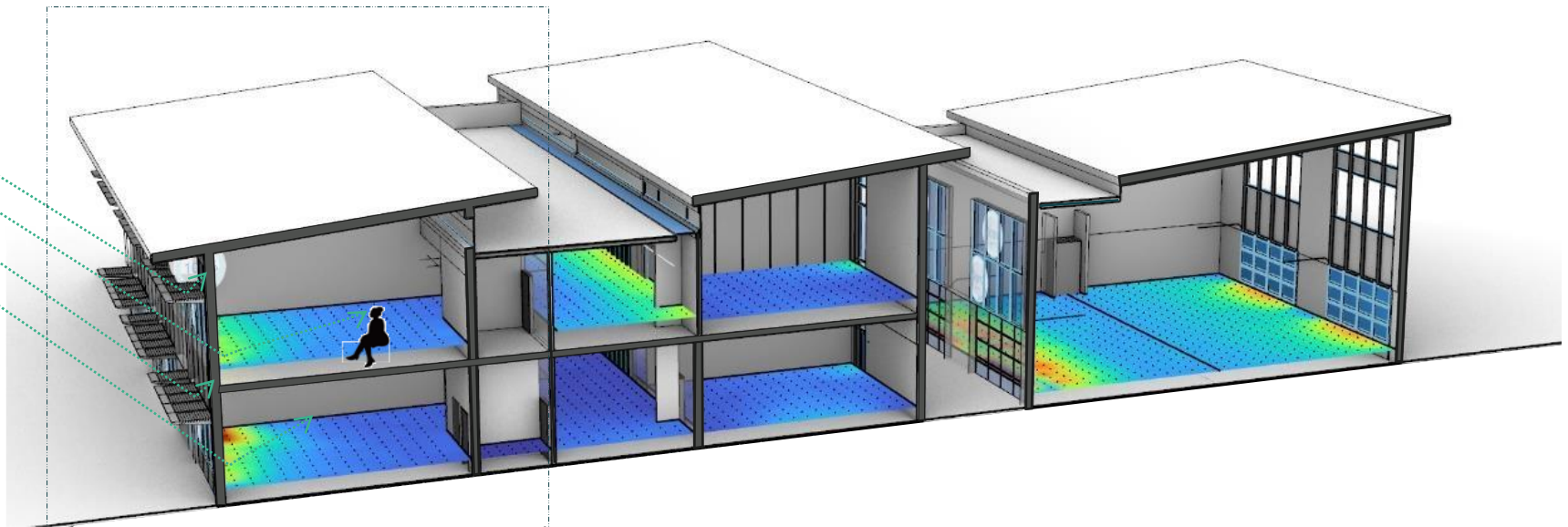
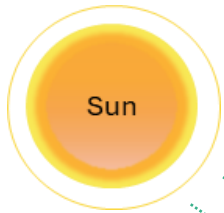
What comes to mind when you think of the “Learning Village” concept?

reader fast inspiration
creative





Campus Aerial



Daylight Analysis



Campus Aerial



Front Entrance



San Benito
HIGH SCHOOL DISTRICT

HMC
Architects
DESIGN
FOR
GOOD



Grand Stairs / Amphitheater



San Benito
HIGH SCHOOL DISTRICT

DESIGN
FOR
GOOD
HMC
Architects



Interactive Learning Jewel Box



Gymnasium / Courtyard



San Benito
HIGH SCHOOL DISTRICT

HMC
Architects
DESIGN
FOR
GOOD

Join at menti.com | use code **4108 2468**

SBHSD SHS TOWNHALL

What's your favorite part of the school design?



3. School Name/ Visual Identity



San Benito
HIGH SCHOOL DISTRICT

HMC DESIGN
FOR
GOOD
Architects

VIC MEETING TIMELINE



School Name / Visual Identity

School Names (Shortlist):

- Buena Vista High School
- Valle Vista High School
- Vista Colinas High School
- Orchard Valley High School

School Name / Visual Identity

Mascots (Shortlist):

- Nighthawks
- Golden Eagles
- Hornets
- Hummingbirds
- Harvesters
- Rattlers / Racers
- Earthquakes / Aftershock / Shockwave / Tremors

School Name / Visual Identity

Q:

Mix & Match Activity

Mix & Match Activity Instructions

1

Please use the cards provided to create groupings. Each group should consist of one school name, one mascot, and one-color palette.

2

Think about combinations that work well **thematically**. Perhaps they create a **memorable** picture in your head, or maybe the words just sound nice together. There are no wrong answers!

3

Choose a color palette that best matches or supports the theme of your grouping.

School Name / Visual Identity



San Benito
HIGH SCHOOL DISTRICT

DESIGN
FOR
GOOD
HMC
Architects

4. Funding Strategies

In the past five years, every new high school built in the state of California required the passage of a bond.

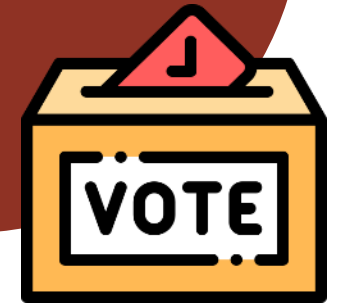


Funding Strategies



- Local funding met with two companion \$70 million bond measures
 - **Measure 1:** Safe, Functional Second High School
 - **Measure 2:** Vocational, Workforce Readiness & Job Training Classrooms
- The need for two bond measures arise from tax rate constraints required by law

Local Funding
= \$140 Million



*All registered voters can
vote on the bond measures*

Local Funding = BOND



Total Bond Cash Flow		
Issuance Year	Bond Issuances	Term (Years)
2025	\$82,000,000	30
2027	\$45,000,000	30
2029	\$13,000,000	30
Total	\$140,000,000	

Investing in the Community



Tax Rate per \$100,000 of Assessed Value	
Average Tax Rate:	\$38.00
Maximum Tax Rate:	\$41.42
Average Annual Taxpayer Amount:	\$200.06
Average Monthly Taxpayer Amount:	\$16.68

Based on the 2024 average single-family home assessed value (not market value): \$526K

Combined Bond Details



State Funding

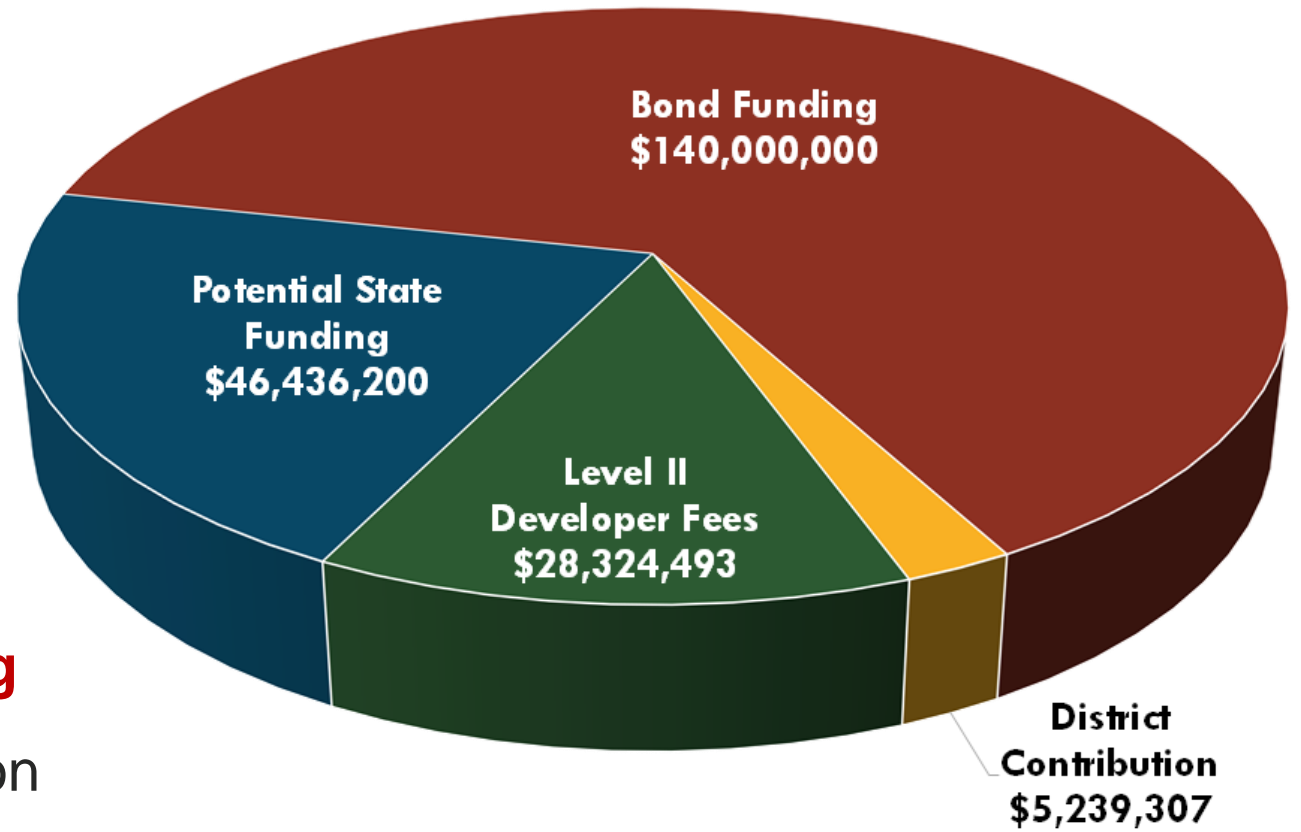
- Requires a local match
- Without a local match, taxes from our community go to other school districts



Developer Fees

- Paid by developers to help build new schools
- District charges the maximum legal fee, \$4.21 per square foot

Non-Bond Funding



Summary of Estimated Total Funding

Non-Bond Funding	\$80 million
Bond Funding	\$140 million
Total Funding	\$220 million

Funding Sources



5. Next Steps

Upcoming Sessions / 2024



Townhall No. 3

June 13, 2024
(English)



Board Meeting

June 25, 2024
Second High School
Design

Celebration

Fly-Thru Animation Video



San Benito

HIGH SCHOOL DISTRICT

Continuing Excellence

Thank you / sbhsd.org / 831.637.5831