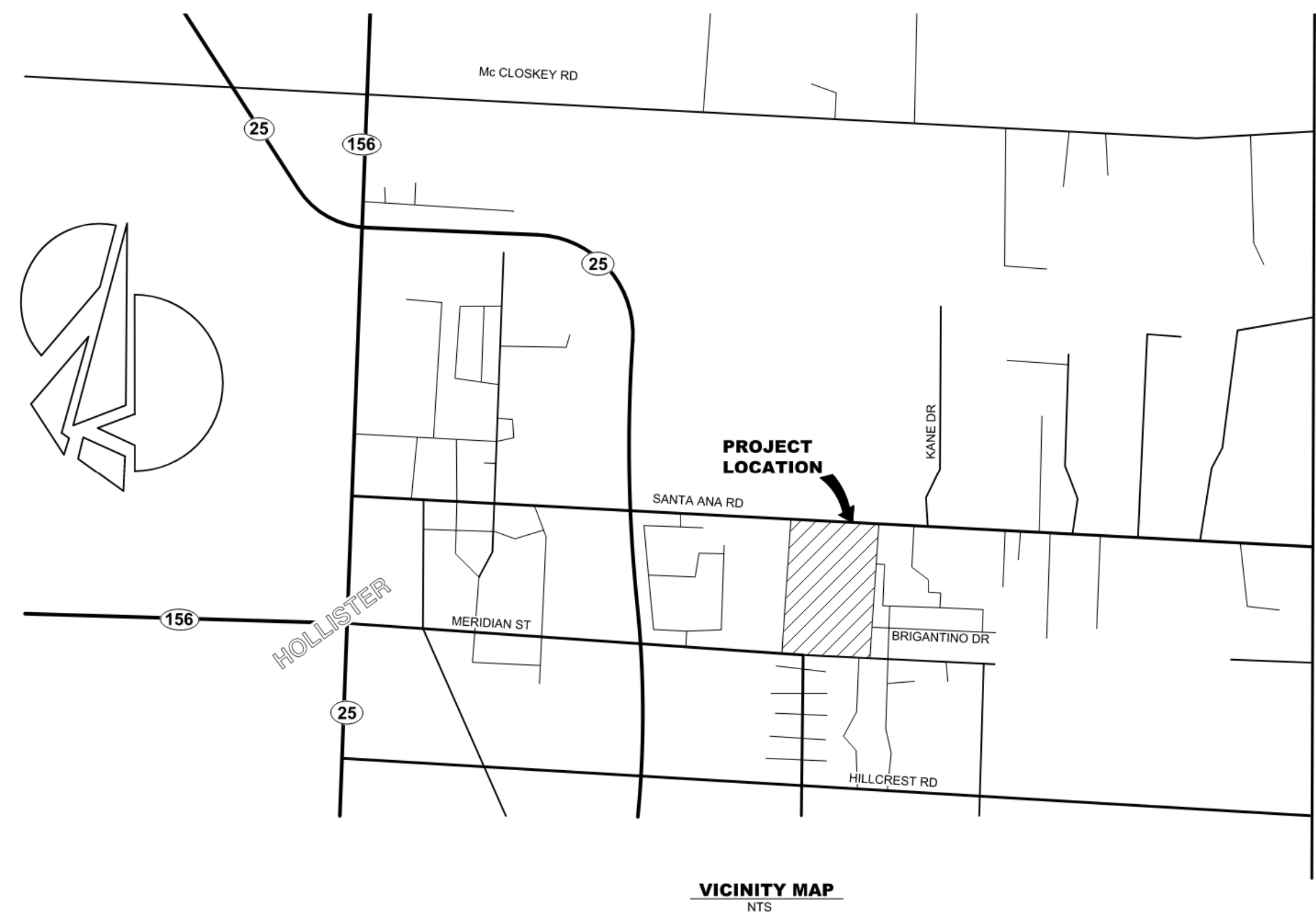


Willow Landing Public Park

June 24, 2024

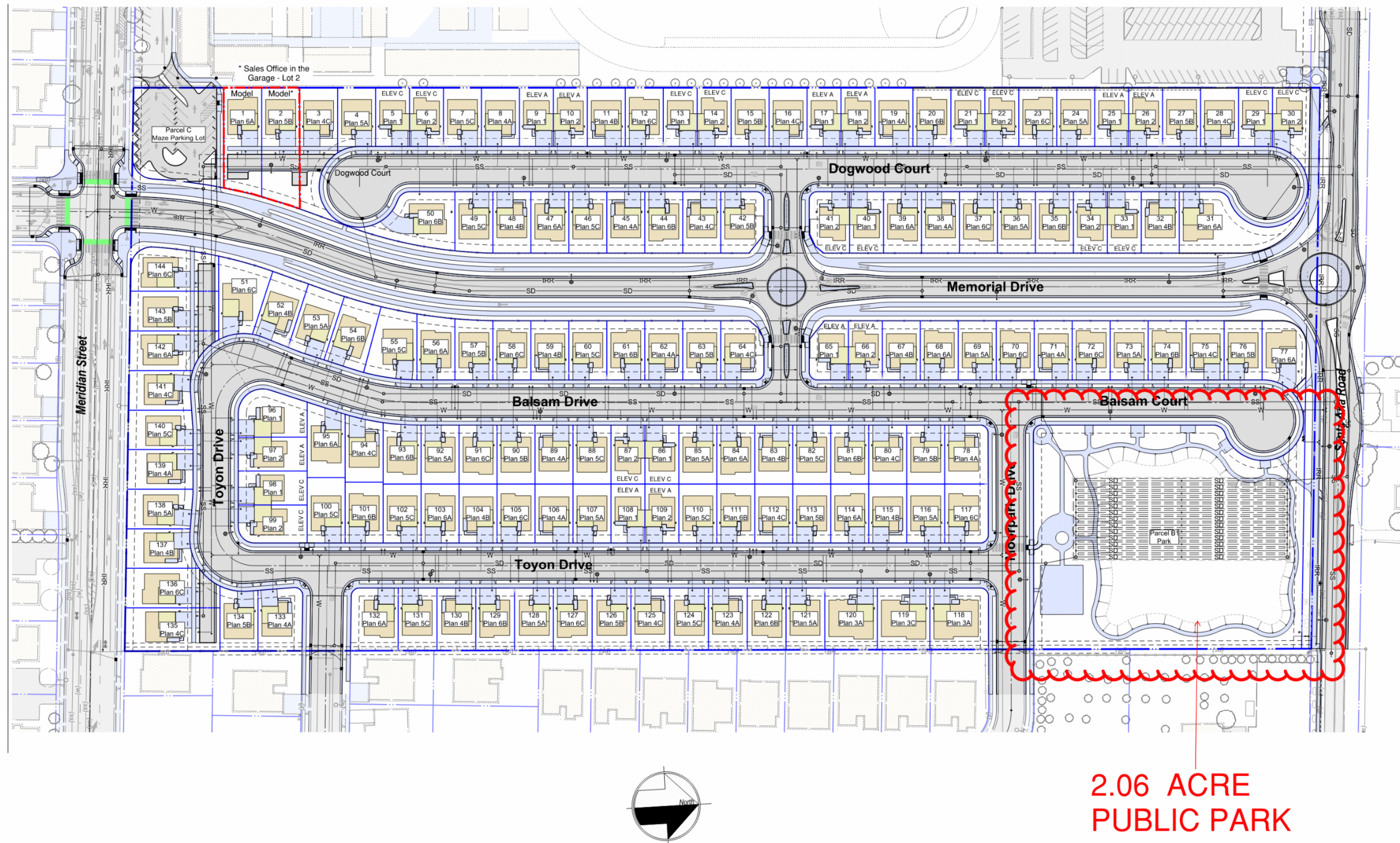
tri pointe[®]
HOMES

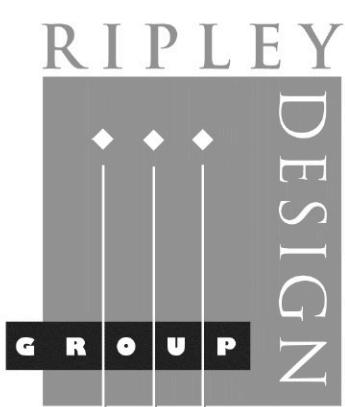
Willow Landing Location



Willow Landing Site Plan

Planned Unit Development for 116 Single Family & 28 Duet, Multi-Family Lots
Including a 2.06 Acre Park Site





LANDSCAPE ARCHITECTURE
LAND PLANNING
1615 BONANZA STREET
SUITE 314
WALNUT CREEK, CA 94596
TEL: 925.938.7377
FAX: 925.9387436

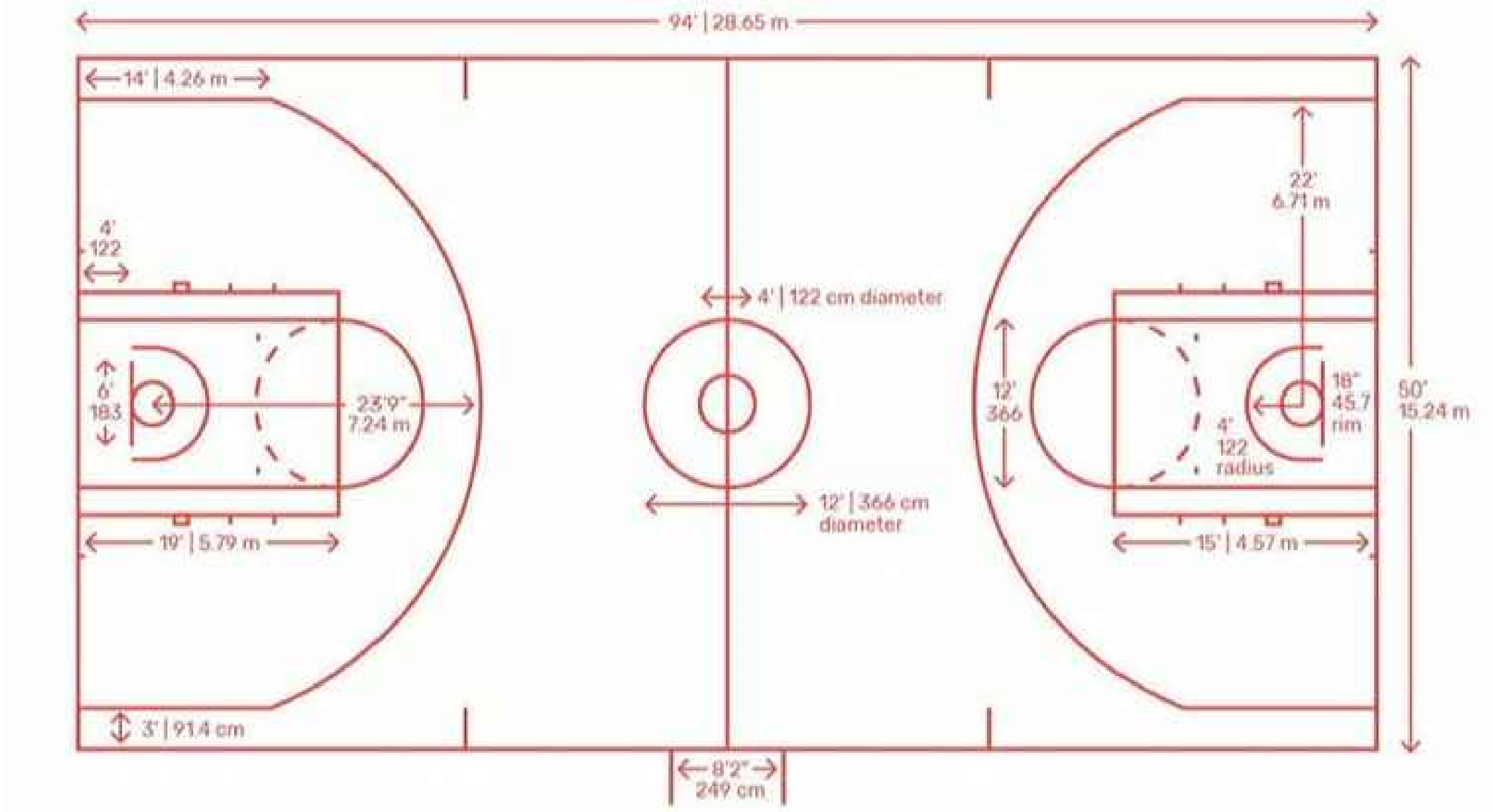
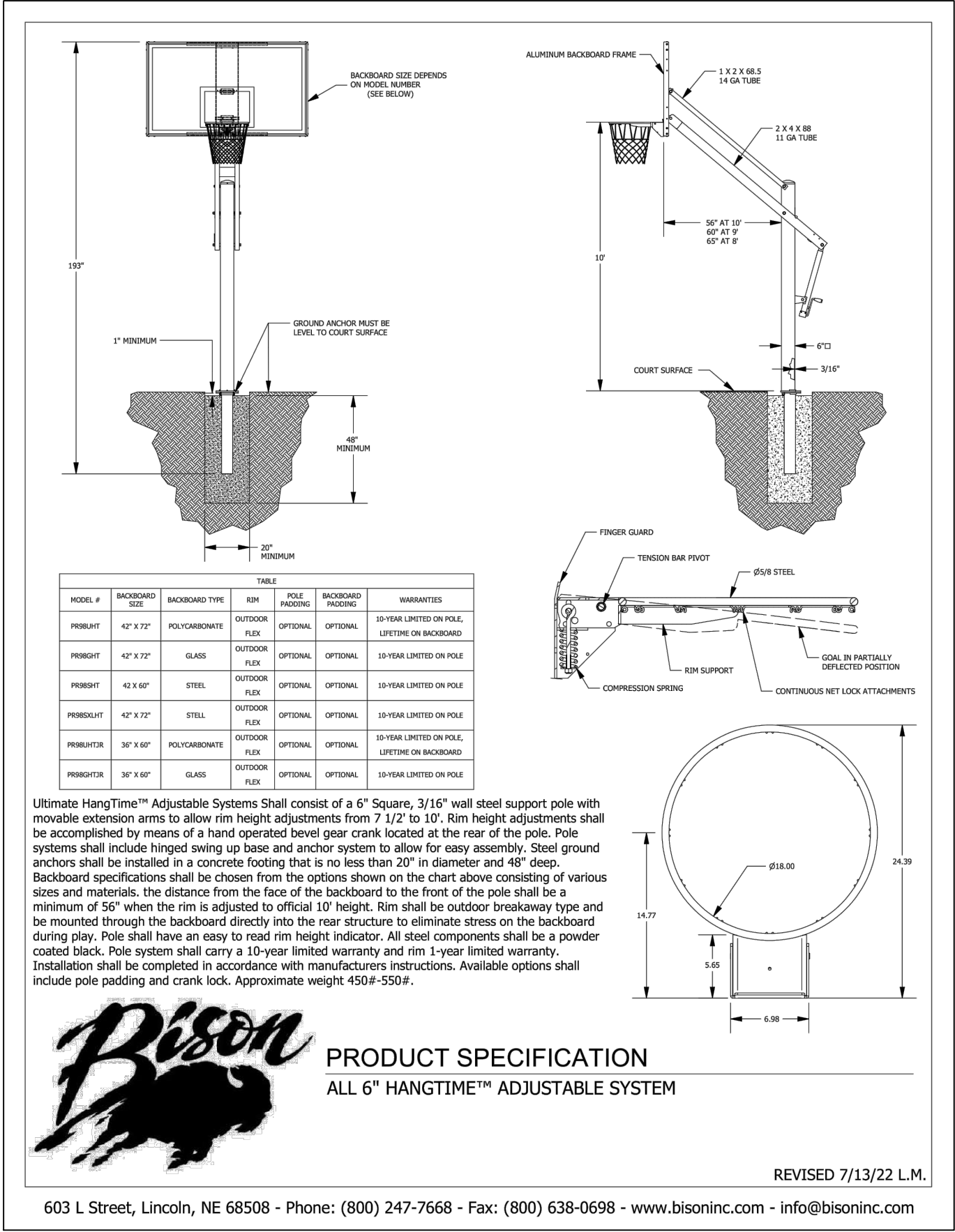
TRI POINTE HOMES

Proposed Park Plan Scheme A

Willow Landing
Hollister, California

June 20, 2024

L1



BASKETBALL COURT



DOG WASTE STATION



SHADE STRUCTURE



PICNIC TABLE/ADA PICNIC TABLE



BENCH



U BIKE RACK



BICYCLE REPAIR STATION



DRINKING FOUNTAIN



TRASH RECEPTACLE



BBQ



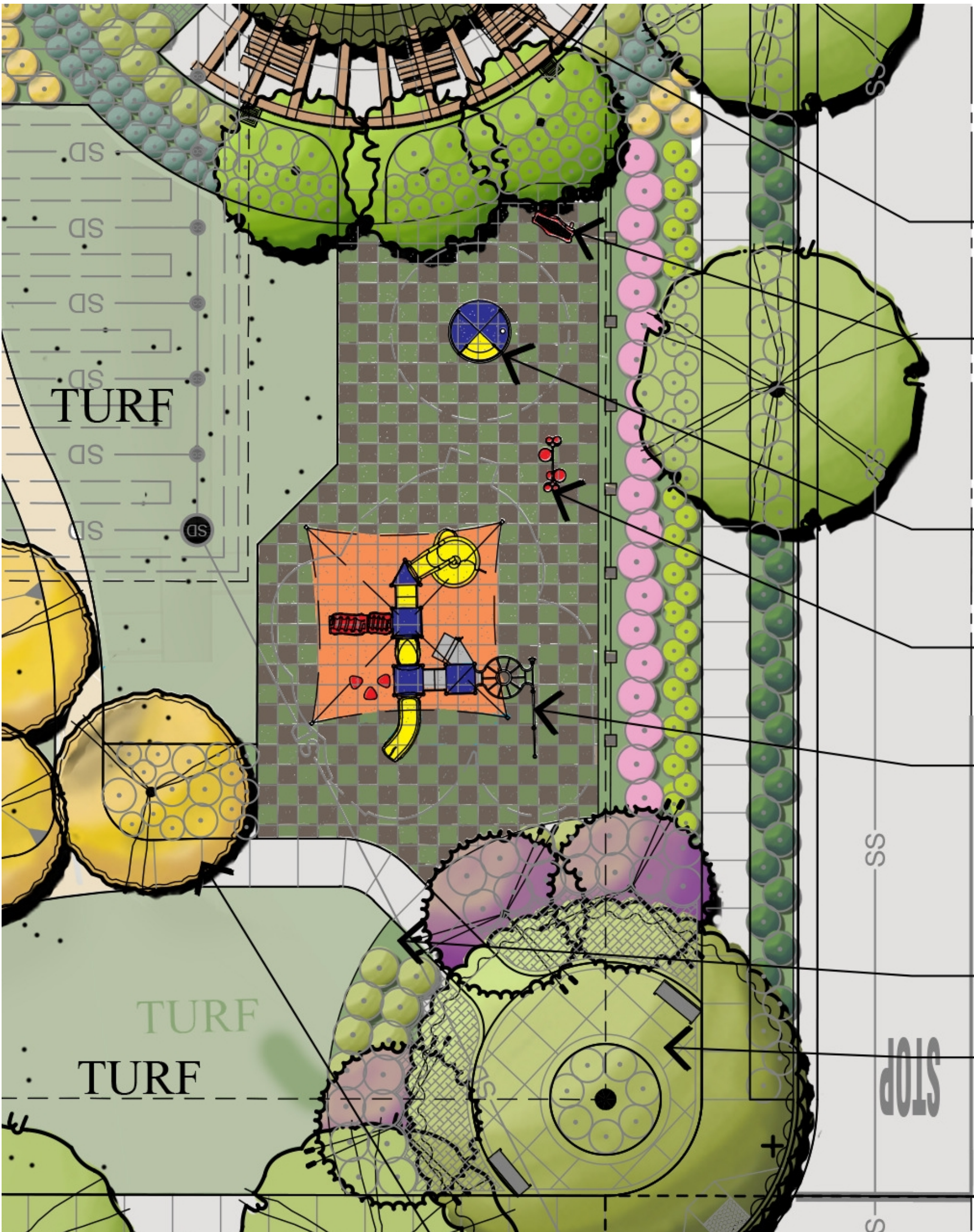
PLAYGROUND RENDERINGS

NOTE:
PROPOSED COLORS OF PLAY
EQUIPMENT TO BE GRAY, BLUE, AND
GREEN AS SHOWN IN THESE IMAGES.

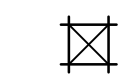


PLAYGROUND TILE SURFACE

NOTES:
PROPOSED COLORS TO BE GRAY AND GREEN IN CHECKERBOARD PATTERN.
PREFERENCE WOULD BE TO USE SYNTHETIC TURF SURFACE FOR THE
RECOMMENDATION BY THE PLAYGROUND REPRESENTATIVES DUE TO ITS LONGEVITY
AND EASE OF MAINTENANCE BEYOND THE RUBBERIZED TILES.



- & PICNIC TABLES
- 18" HIGH SEATWALL PLANTER
W/ SPECIMEN TREE
- MELODY CHIMES
PLAY EQUIPMENT
- INCLUSIVE WHIRL
PLAY EQUIPMENT
- BEAT CLUB DRUM
PERCUSSION SET
- INCLUSIVE PLAY STRUCTURE
W/ SHADE CANOPY &
RUBBERIZED PLAY TILE
- DOG WASTE STATION
- PARK ENTRY W/ ACCENT
PAVING & BENCHES



**INCLUSIVE IN-GROUND
ORBIT SPINNER**



**SANSA-RIMBA
PERCUSSION EQUIPMENT**



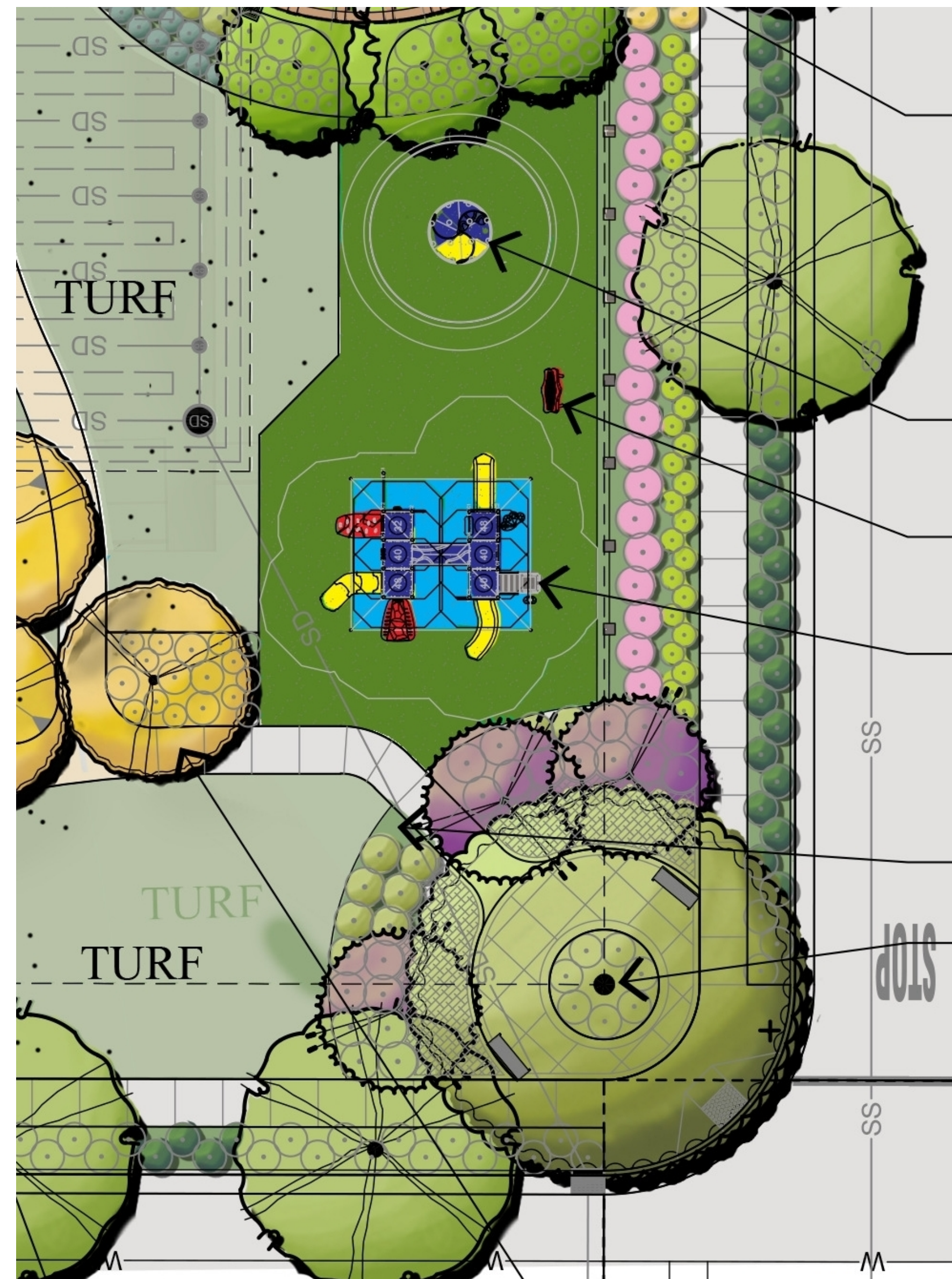
PLAYGROUND RENDERINGS

NOTE:
PLAYGROUND EQUIPMENT COLOR
TO MATCH RENDERINGS



**TIGER TURF
SYNTHETIC PLAYGROUND TURF**

NOTE:
PREFERENCE WOULD BE TO USE SYNTHETIC TURF SURFACE PER THE
RECOMMENDATION BY THE PLAYGROUND REPRESENTATIVES, DUE TO ITS LONGEVITY
AND EASE OF MAINTENANCE BEYOND THE RUBBERIZED TILES.



18" HIGH SEATWALL PLANTER
W/ SPECIMEN TREE

INCLUSIVE ORBIT SPINNER
PLAY EQUIPMENT

SANSA-RIMBA
PERCUSSION SET

INCLUSIVE PLAY STRUCTURE W/
SHADE CANOPY & SYNTHETIC TURF
PLAY SURFACE

DOG WASTE STATION

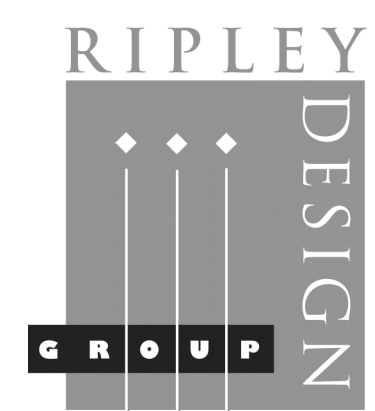
PARK ENTRY W/ ACCENT
PAVING & BENCHES



TRI POINTE HOMES



Preliminary Park Details Scheme B



LANDSCAPE ARCHITECTURE
LAND PLANNING
1615 BONANZA STREET
SUITE 314
WALNUT CREEK, CA 94596
TEL: 925.938.7377
FAX: 925.9387436

Willow Landing

Hollister, California

June 20, 2024

L3



PLANT LEGEND

COMMON OPEN SPACES

BOTANICAL NAME	COMMON NAME	SIZE	WATER USE
SHRUBS			
ACA 'C.I.'	ACACIA 'COUSIN IT'	LITTLE RIVER WATTLE	5 GALLON
ANI 'B.P.'	ANIGOSANTHOS 'BUSH PEARL'	DWARF PINK KANGAROO PAW	5 GALLON
ANI 'B.P.'	ANIGOSANTHOS 'BUSH PEARL'	KANGAROO PAW	1 GALLON
ARC 'H.M.'	ARCTOSTAPHYLOS 'HOWARD' MCMINN	MANZANITA	5 GALLON
BUD 'B.K.'	BUDDLEIA D. 'BLACK KNIGHT'	BUTTERFLY BUSH	5 GALLON
BUD DWF	BUDDLEIA D. 'LOW AND BEHOLD'	DWARF BUTTERFLY BUSH	5 GALLON
CAL 'L.J.'	CALLISTEMON V. 'LITTLE JOHN'	DWARF BOTTLEBRUSH	5 GALLON
CAR TUM	CAREX TUMICOLA DIVULSA	BERKELEY SEDGE	1 GALLON
CEA 'D.S.'	CEANOTHUS 'DARK STAR'	CALIFORNIA LILAC	5 GALLON
CHO TEC	CHORONOPTALUM TECTORUM	CAPE RUSH	5 GALLON
CIS HYB	CISTUS HYBRIDUS	ROCKROSE	5 GALLON
DIE BIC	DIETES BICOLOR	FORTNIGHT LILY	5 GALLON
DIE IRI	DIETES IRIODES	FORTNIGHT LILY	1 GALLON
ELA 'G.E.'	ELAEGNUS X EBBINGE 'GILT EDGE'	RUSSIAN OLIVE	5 GALLON
EUN 'G.S.'	EUONYMUS J. 'GREEN SPIRE'	GREEN SPIRE EUONYMUS	5 GALLON
EUN 'MIC'	EUONYMUS J. 'MICROPHYLLUS'	BOX LEAF EUONYMUS	5 GALLON
FEI SEL	FEUOA SELLOWIANA	PINEAPPLE GUAVA	5 GALLON
FES 'MAI'	FESTUCA 'MAIRE'	ATLAS FESCUE	1 GALLON
GRE 'NOE'	GREVILLEA NOELLII	WOOLY GREVILLEA	5 GALLON
HET ARB	HETEROMELES ARBUTIFOLIA	TOYON	5 GALLON
HYP MOS	HYPERICUM MOSERIANUM	GOLD FLOWER	5 GALLON
JUN 'SKY'	JUNIPER S. 'SKY ROCKET'	SKY ROCKET JUNIPER	5 GALLON
KNI UVA	KNIPHOFIA UVARIA	HOT POKER	5 GALLON
LAN MON	LANTANA MONTEVIDENSIS	TRAILING LANTANA	1 GALLON
LAV MAR	LAVATERA MARITIMA	TREE MALLOW	5 GALLON
LEU 'C.G.'	LEUCADENDRON 'CLODBANK GINNY'	CONEBUSH	5 GALLON
LEY 'C.S.'	LEYMUS C. 'CANYON PRINCE'	CANYON PRINCE WILD RYE	5 GALLON
LIG 'TEX'	LIGUSTRUM J. 'TEXANUM'	WAXLEAF PRIVET	5 GALLON
LOR BRE	LOMANDRA LONGIFOLIA BREEZE	DWARF MAT RUSH	5 GALLON
LOR CHI	LOROPETALUM CHINENSIS	GREEN FRINGEFLOWER	5 GALLON
LOR 'P.P.'	LOROPETALUM C. 'PURPLE PIXIE'	DWARF PURPLE FRINGELWER	5 GALLON
LOR 'RAZ'	LOROPETALUM 'RAZZLEBERRY'	PURPLE FRINGEFLOWER	5 GALLON
MUH RIG	MUHLENBERGIA RIGENS	DEER GRASS	5 GALLON
MYR 'COM'	MYRTUS C. 'COMPACTA'	DWARF MYRTLE	5 GALLON
NEP FAA	NEPETA FAASSENII	CATMINT	1 GALLON
OLE 'L.O.'	OLEA E. 'LITTLE OLLIE'	DWARF OLIVE	5 GALLON
PHO 'D.D.'	PHORMIUM 'DARK DELIGHT'	NEW ZEALAND FLAX	5 GALLON
PHO 'P.B.'	PHORMIUM 'PLAT'S BLACK'	NEW ZEALAND FLAX	5 GALLON
PHO 'Y.W.'	PHORMIUM 'YELLOW WAVE'	NEW ZEALAND FLAX	5 GALLON
PRU 'B8T'	PRUNUS 'BRIGHT & TIGHT'	BRIGHT & TIGHT LAUREL	5 GALLON
RHA 'L.S.'	RHAMNUS C. 'LITTLE SUR'	COFFEEBERRY	5 GALLON
RHA 'BAL'	RHAPHIOLEPIS I. 'BALLERINA'	INDIA HAWTHORN	5 GALLON
RHA 'MIN'	RHAPHIOLEPIS I. 'MINOR'	DWARF YEDDO HAWTHORN	5 GALLON
SEN SER	SENCIO SERPENS	BLUE CHALKSTICKS	1 GALLON
TEU CHA	TEUCRIUM CHAMAEDRYS	GERMANDER	5 GALLON
WES 'G.B.'	WESTRINGIA 'GREY BOX'	DWARF COAST ROSEMARY	5 GALLON
WES 'W.H.'	WESTRINGIA 'WYNABBIE HIGHLIGHT'	SHINY XYLISMA	5 GALLON
XYL 'COM'	XYLOSMA 'COMPACTA'	SHINY XYLISMA	5 GALLON

GROUND COVERS

ARCTOSTAPHYLOS 'PIGEON POINT'	PIGEON POINT MANZANITA	LOW
1 GAL AT 36" O.C.		
COTONEASTER DAMMERI 'CORAL BEAUTY'	BEARBERRY COTONEASTER	1 GALLON
1 GAL AT 36" O.C.		
SENCIO MANDRALISCAE	BLUE CHALK STICKS	1 GALLON
1 GAL AT 24" O.C.		
MYOPORUM PARVIFOLIUM	MYOPORUM	1 GALLON
1 GAL AT 36" O.C.		
TURF	TALL FESCUE TURF	HIGH
BOLERO - SODDED		
SODDED AVAILABLE FROM DELTA BLUE GRASS		

MASTER TREE LEGEND

BOTANICAL NAME	COMMON NAME	HEIGHT / SPREAD	SIZE	WATER USE
STREET TREES				
ACER R. 'OCTOBER GLORY'	RED MAPLE ②	50'/40"	15 GALLON	MEDIUM
ARBUS 'MARINA'	MARINE MADRONE	40-50'/40'	15 GALLON	LOW
PISTACHIA CHINENSIS	CHINESE PISTACHE ⑪	30'-60'/30'-60'	15 GALLON	LOW
QUERCUS LOBATA	VALLEY OAK ④	30'-60'/30'-60'	15 GALLON	LOW
TRISTANIA CONFERTA	BRISBANE BOX ②	30-40'/25'	15 GALLON	LOW-MEDIUM
ZELKOVA S. 'VILLAGE GREEN'	JAPANESE ZELKOVA ⑦	40'/50'	15 GALLON	MEDIUM
ACCENT TREES				
CERCIS OCCIDENTALIS	WESTERN REDBUD ⑩	15-20'/10'-15'	15 GALLON	LOW
ABERSTROEMIA 'ZUNI'	CRAPE MYRTLE ⑨	15'/10'	15 GALLON	LOW
LAURUS N. 'SARATOGA'	SWEET BAY ⑥	30'/30'	15 GALLON	LOW
PRUNUS C. 'KRAUTER VESUVIUS'	PURPLE-LEAF PLUM ③	20'/15'	15 GALLON	LOW

54 TOTAL TREES

